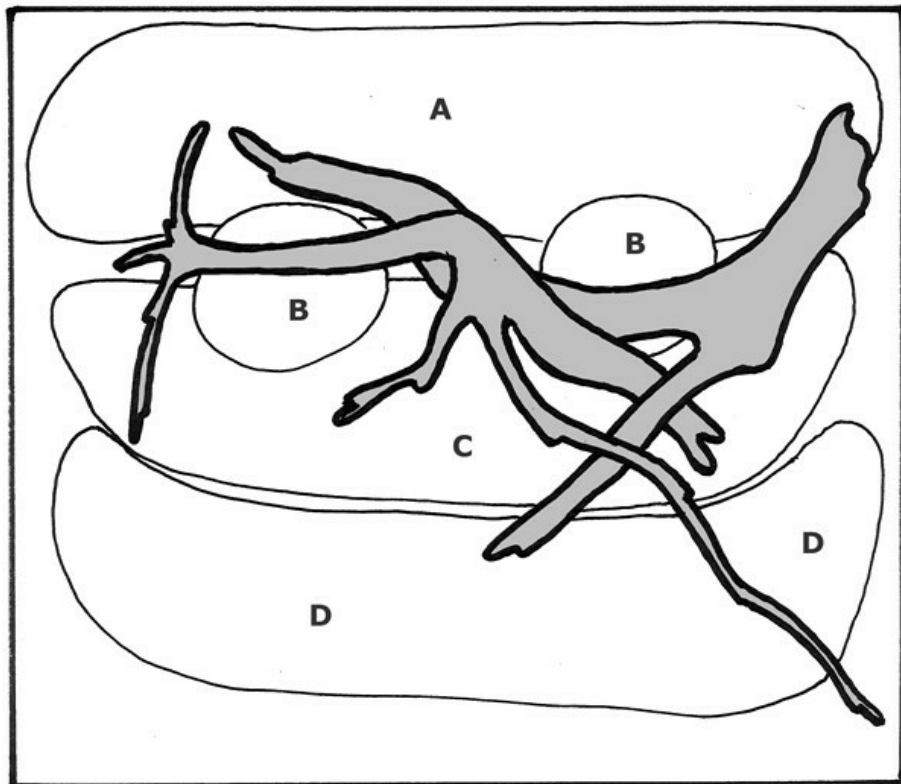




Layout 66 (48 L)



by Tropica

A vigorous, green pearl, built after the "Dutch Style" with rows of green plants on different levels, but with a tree root. *Hydrocotyle tripartita* with tiny, light green leaves create a vivid front. Lush *Crypter* in the middle slide almost unnoticeable into the deep silence between *Bleheri*'s great leaves in the back. A couple of *Echinodorus 'Reni'* are used as contrast plants centrally in the aquarium.

Tip! Choosing only a few different plants adds a strong impression of peace and harmony.

Technique

Aquarium:	INTERPET
Volume:	48 L
Light:	Fluval M 24c 150w
Substrate:	Tropica Substrate
Gravel:	Black 2-3mm gravel
Filter:	Internal filter
CO2:	2ml TNC Carbon per day
Fertiliser (weekly):	14 ml Premium Fertiliser
Maintenance (hours per week):	<1/2

Plants used in this layout

)	()	1 pcs.
A)	<i>Echinodorus grisebachii</i> 'Bleherae'	(071) 3 pcs.
A)	()	3 pcs.
B)	<i>Echinodorus 'Reni'</i>	(072D) 2 pcs.
B)	<i>Echinodorus 'Reni'</i>	(072D PCS) 2 pcs.
C)	<i>Cryptocoryne wendtii</i> 'Green'	(109) 3 pcs.
C)	()	3 pcs.
C)	<i>Cryptocoryne wendtii</i> 'Green'	(109 TC) 3 pcs.
D)	<i>Hydrocotyle tripartita</i>	(039B) 3 pcs.
D)	<i>Hydrocotyle tripartita</i>	(039B TC) 3 pcs.