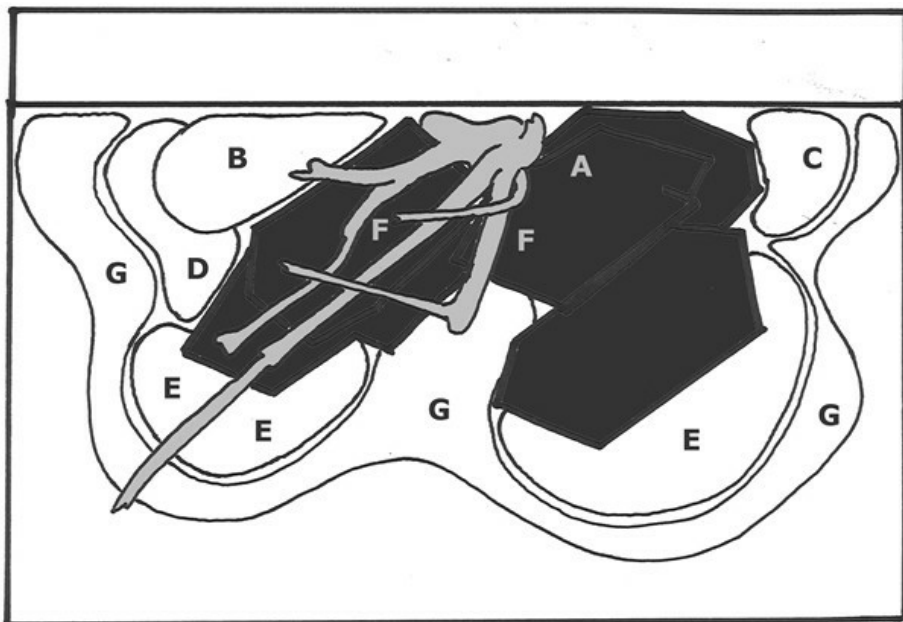




# Layout 63 (100 L)



by Tropica

Easy and safe. All plants are able to handle relatively low lighting and no addition of CO2 - but better lighting and CO2 naturally gives a more beautiful result. Rotala will repay with reddish shoot tips and Eleocharis with a denser and more compact growth. The hardy Spiky moss has been divided into small tufts that have been tucked into the ground layer. The dark moss carpet suits the light-green Eleocharis really well.

**Tip!** As the selection of coloured plants in the green Easy category is limited, the use of coloured rocks is an obvious choice.

## Technique

Aquarium:	IHM MÜLLER
Volume:	100 L
Light:	T5 Daylight 2 x 24W
Gravel:	Rådasand 1.2-2.0 mm
Filter:	Eheim pump 600 L/h
CO2:	25 mg/L
Fertiliser (weekly):	25 ml Premium Fertiliser + 25 ml Specialised
Maintenance (hours per week):	<1/2

## Plants used in this layout

A)	Microsorium pteropus 'Narrow'	(008A YWS)	1 pcs.
B)	Echinodorus grisebachii 'Bleherae'	(071)	2 pcs.
C)	Rotala rotundifolia	(033)	1 pcs.
D)	Cryptocoryne beckettii 'Petchii'	(108A)	1 pcs.
E)	Eleocharis parvula	(132C)	5 pcs.
F)		( )	1 pcs.
G)	Taxiphyllum sp. 'Spiky Moss'	(003G POR)	3 pcs.